

New e10 R controller



Performance

- Fully programmable
- Cutting edge Microprocessor: quick start and smooth browsing
- Marking history and auto diagnostic functions
- Standalone operations (no PC required)

Versatility

- 100% compatible with the previous machine generation
- An ideal controller for the Integrated range

Easy to integrate

- Compact : reduced volume
- Adaptable : connectors can point upwards or downwards

All marking types

- Datamatrix codes
- Angular and circular texts
- Alphanumeric marks
- Logos, images...

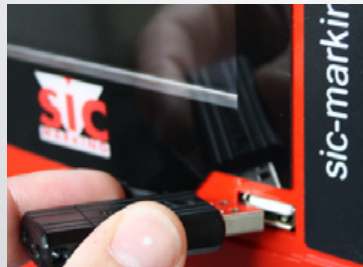
Robustness

- Industrial membrane keyboard
- Fully enclosed controller (IP40): no openings or fans

FOCUS ON THE e10 R SPECIAL FEATURES



Color screen



USB connection on the front panel : for simple transfer of marking files



Full connectivity : suited to adapt to different communication protocols (some are optional)

MARKING EXAMPLES



Datamatrix - Dot peen



D Axis logo - Dot peen

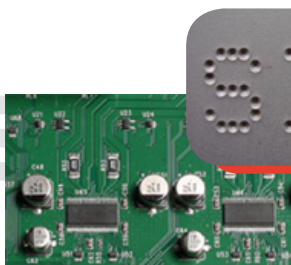


Alphanumeric - Scribing

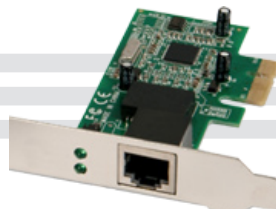
ELECTRONIC TECHNICAL FEATURES

e10 R	
Dimensions (d x l x h)	112 x 380 x 222 mm (4.4 x 15 x 8.7 inches)
Dimensions with Rail DIN fixation kit (d x l x h)	140 x 380 x 222 mm (5.5 x 15 x 8.7 inches)
Weight	5 kg (11 lbs)
LCD display	95 x 54 mm (3.7 x 2.1 inches)
Keyboard	Qwerty integrated, membrane overlay
Power	300 Watt
Power supply	Single phase, 85 to 260 VAC, 50 to 60 Hz
Number of controlled axis	2 (3rd and 4th axis optional)
Operating temperature	From 5 to 40°C / 40 to 105°F
SOFTWARE	
Memory	7110 Ko
Alphanumeric characters	Serial number, date coding
Logos	Download from PC or USB Memory Stick
Data Matrix	Up to 348 characters, 48 x 48 dots
Fonts	Arial, Courier, OCR, OCRA (custom fonts optional)
Style	Angular, radial, inverse, mirror
Speed	Up to 5 characters/sec.
Character size	From 0.1 mm / 0.004 inches to 99 mm / 4 inches (restricted by marking window size)
Impact force	9 adjustable levels
Depth	Up to 0.5 mm / 0.02 inches (depending on material marked)
Resolution between dots	0.05 mm / 0.002 inches
Work shift management	10 shifts
Password protection	3 security levels
Historical function	Available by password
Maintenance assistance	Auto diagnostic component
Software	15 languages
COMMUNICATION	
Ports	RS232, RS422, USB (RS485 Profibus and TCP/IP Ethernet optional)
Inputs/Outputs	8/8
External keyboard input	USB port
External output	5 V – 0,5 A and 24 V – 0,5 A
Logos	Logo creation and transfer software or USB Memory Stick
File backup on PC	Transfer software or USB Memory Stick

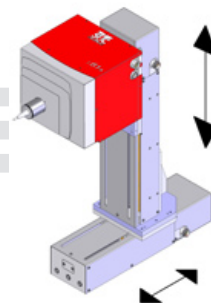
OPTIONS AND ACCESORIES



Booster card for deep marking



Ethernet card



3rd and 4th axis control card



Rail DIN fixation Kit



Purshotam Company Pvt. Ltd.
 8, Lyons Range, 1st Floor, Post Box # 2005 G.P.O
 Kolkata 700 001, INDIA
 Telephone : +91 33 2243 4941 / 2231 5344 /
 Fax : +91 33 2230 5299
 E-mail : sales@purshotam.com
 Website : www.purshotam.com