

# DOT PEEN PORTABLE MARKING SYSTEM E-TOUCH XL



- + Large colour touch screen.
- + Optimised screen resolution for perfect visualization of the marking and precise zooming in on details.
- + User-friendly icon-based programming.
- + Can be used with or without gloves.



Interchangeable front plate thanks to a new revolutionary magnet system.



A large marking window of 120 x 50mm for your alphanumeric codes, datamatrix, or logo.



Heavy-duty X-Y cross table for precise and uniform marking throughout the entire marking window.

## FULL PACKAGE



- + Transport suitcase
- + Maintenance kit
- + Accessories and operating instructions

## E-TOUCH SPECIFICS

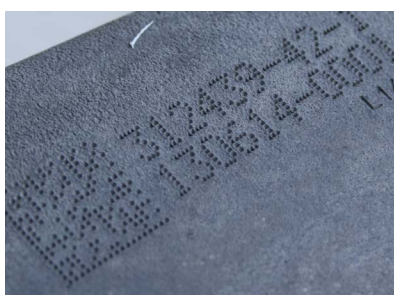
Front plate with magnetic interchangeable system

Heavy-duty X-Y cross table

Large colour touch screen



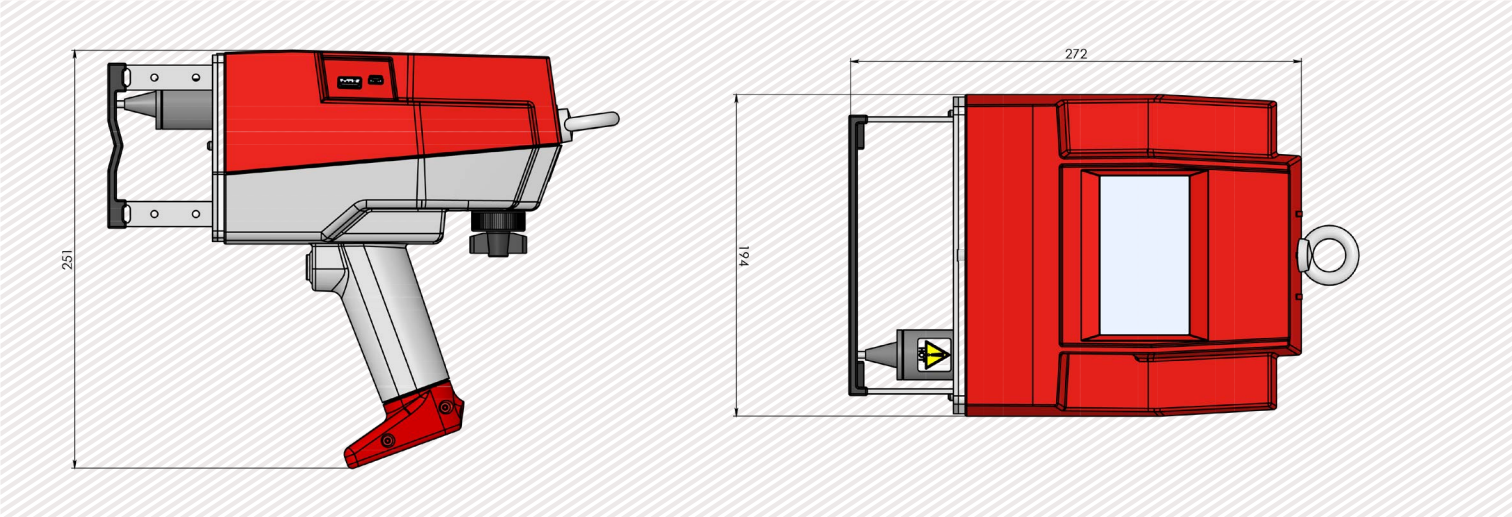
## MARKING EXAMPLES



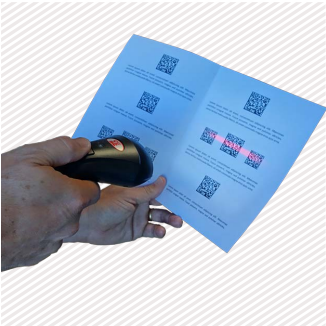
Components defined for use in an industrial environment offering great **ROBUSTNESS FOR ONLY 2.6 kg.**

# TECHNICAL & MECHANICAL FEATURES

	e-touch XL
Marking window	120 x 50 mm - 4.7 x 2 in
External dimensions	272 x 194 x 251 mm - 10.7 x 7.6 x 9.9 in
Weight	2.6 kg - 4.4 lbs
Stylus	Tungsten carbide
Cable length	5 m



# OPTIONS



1D / 2D reader (wireless)



Booster option available for deep marking



Hook and balancing system



Bluetooth USB key for programming via android application



Barcode reader (wireless)



Reversible column base (with screen orientation change for better use)

- + Magnetic front plate
- + Custom front plate
- + Maintenance kit

## EMBEDDED CONTROLLER



+ User-friendly 2 hand icon based programming

+ Variety of markings (DataMatrix, circular, alphanumeric, logos...)

+ Reduced space requirement

+ Fully programmable



+ Large colour touch screen



+ USB port, allows easy marking file transfer



## Technical & electronic features

E1 control unit	
LCD screen	HD colour, 95 x 55 mm
Screen orientation change	Yes - adaptation to different column applications
Keyboard	Touch screen
Power	100 Watt
Power supply	18V / 3A
Inputs/Outputs	Jack socket
PC software	Creation, backup and transfer of logo files

## APPLICATIONS





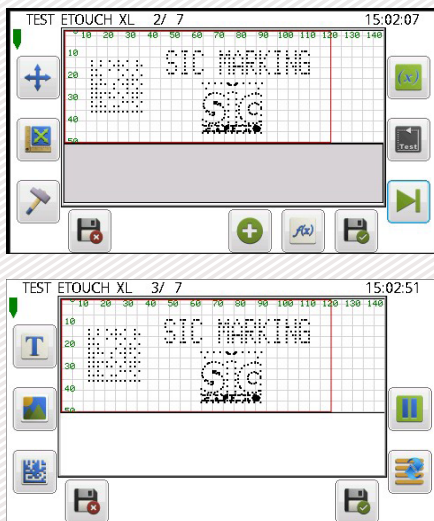
# E1 RANGE SOFTWARE

## Software features

Memory	>100 Mo
Variable	Alphanumeric, incrementation, timestamp, barcode
Logos	Download from a PC or USB key
Fonts	Arial, Comic, Comic_B, Courier, OCR, OCR_BOLD, OCRA, 4x6
Language	17 available including Russian
Style	Angular, radiant, linear, radial, datamatrix, logo
Character Size	From 1 mm to 60 mm (limited following marking window)
Impact Force	9 adjustable levels
Depth	Up to 0,3 mm (according to the material)
Resolution Between Dots	variable, 0,22 mm MAX
Password	2 security levels

## Icon programming

### Graphic View



+ Ergonomics and quick programming

+ History function with anti-duplicate

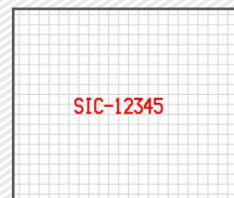
+ Automatic or semi-automatic mode using barcode reading



 Angular marking



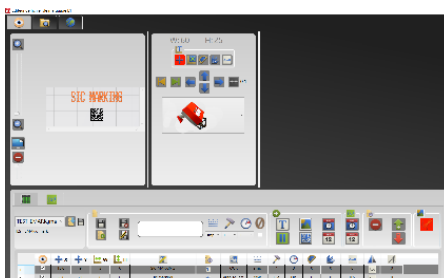
 Radiant marking



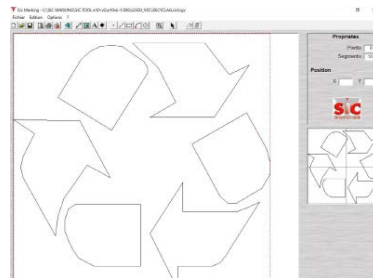
 Variable text or increment

## PC UTILITIES

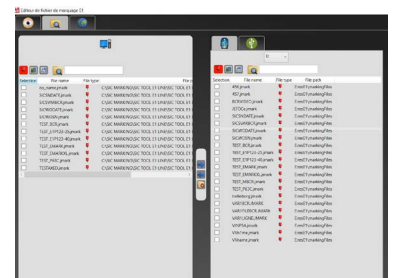
### File editor



### Creation of logos



### File manager



**PURSHOTAM**

**Industrial Solutions**  
Serving Indian Industry  
since 1946

Address:

**Purshotam Company Private Limited**  
'Sharada Complex', Ground Flr,  
Plot No. BG - SEI - 10/22-3  
MIDC Bhosari, Tal - Haveli,  
Pune : 411039 India

[www.purshotam.com](http://www.purshotam.com)

**National Free No :18001211525**

For Sales Enquiry : [sales@purshotam.com](mailto:sales@purshotam.com)

Pune ♦ Kolkata ♦ Delhi ♦ Chennai ♦ Bangalore ♦ Hyderabad ♦ Coimbatore ♦ Jamshedpur